

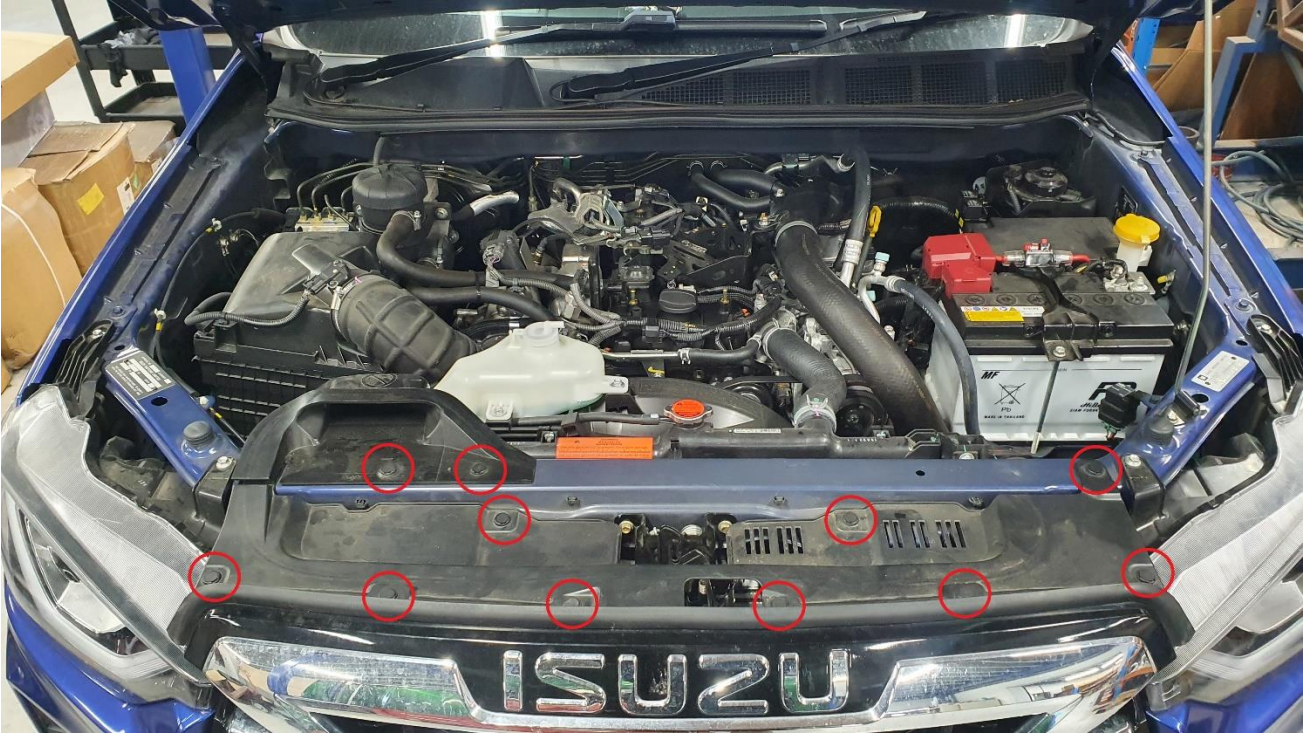
PLAZMAMAN

2020+ DMAX INTERCOOLER KIT INSTALLATION GUIDE



OEM INTERCOOLER REMOVAL STEPS

1. Start by removing the engine cover, this is simply done by pulling it away from the engine in an upwards direction.
2. Take off the airbox air dam and upper plastic shroud by removing all plastic retaining clips.



3. Now remove the grill by releasing the retaining clips from the top, you will also find a single Philips head screw in the front of the grill. See below.



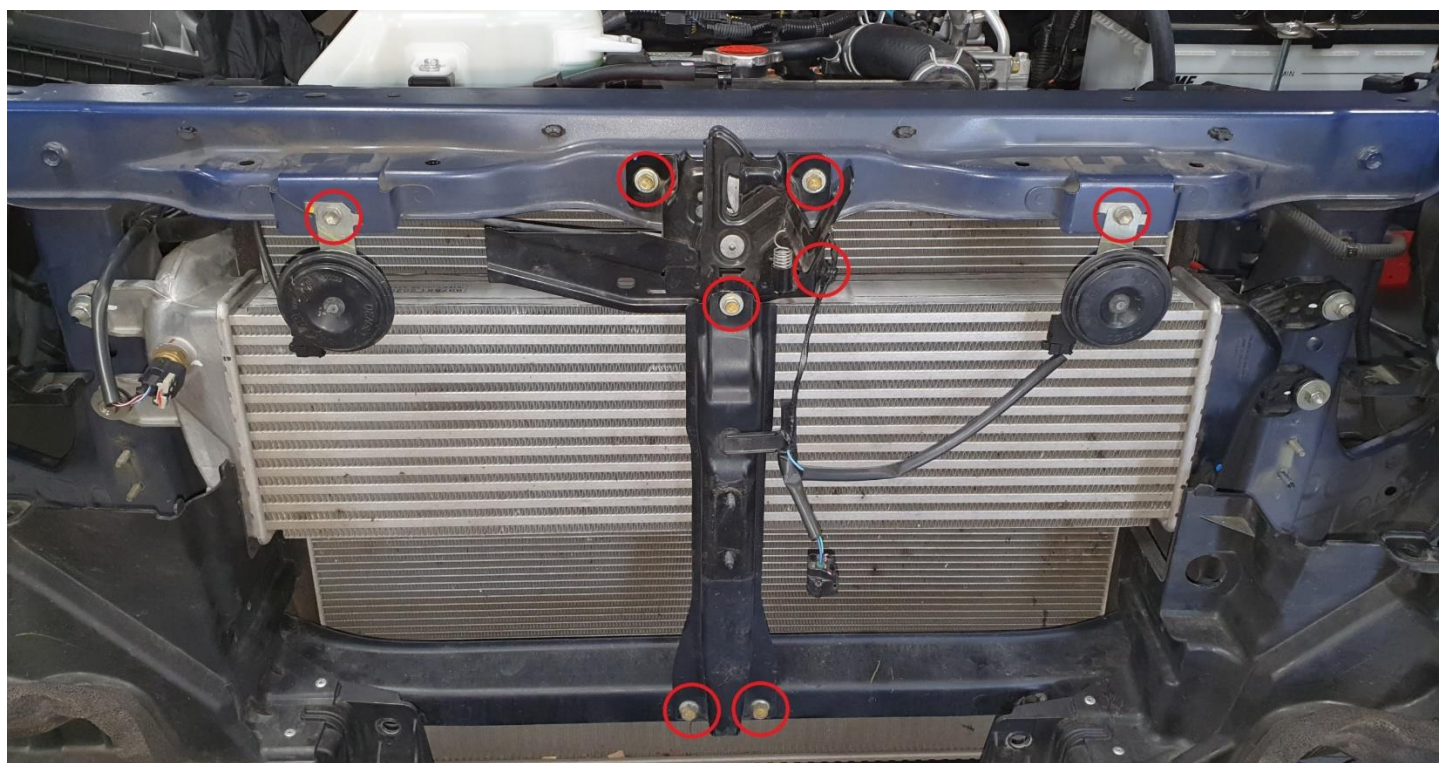
4. Remove all 10mm bolts and plastic retaining clips from the underside of the bumper. You also will find 1 plastic push rivet on each side of the bumper securing it to the fender and a single 10mm bolt on the wheel well splash shield on each side.
5. Carefully remove the bumper, on the passenger side you will find one electrical connector you will need to remove before setting the bumper aside in a safe location.
6. Remove the 2 air diversion panels on each side of the intercooler by removing the 4 plastic retaining clips.
7. To remove the upper bumper support, you will need to undo the x6 nuts (2x on each side and 2x in the middle), 2x bolts and 2x plastic retaining clips hidden shown below beside the headlight.



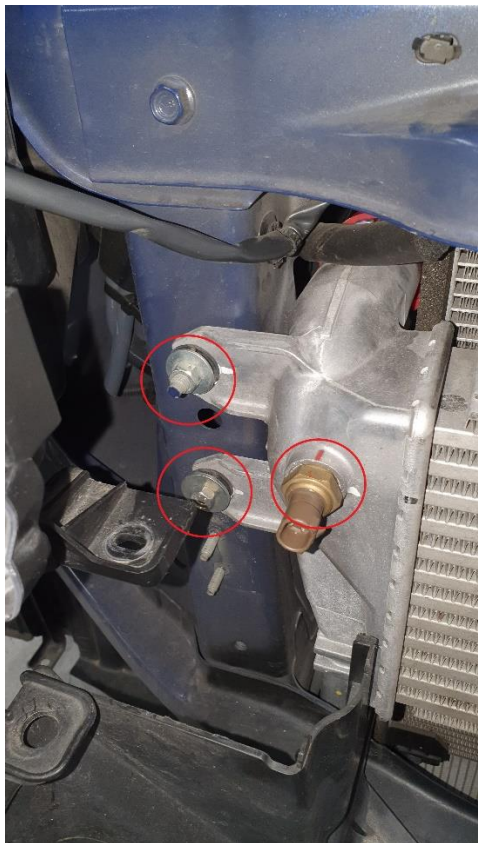
8. Remove the 2 plastic retaining clips on the lower air diversion plate and remove the 2x 10mm bolts holding the 2 bumper support straps on either side of the air dam, this will need to be done before you can remove it from the vehicle. See below of the bolts hidden location illustrated with the air dam removed.



9. Remove the centre radiator support structure, bonnet latch and horn.



10. Take your intake pipe, hot and cold side intercooler silicon's off the car, you will have one hose clamp on each side of the silicon. After this remove the air temp sensor and 4 bolts holding the OEM intercooler.



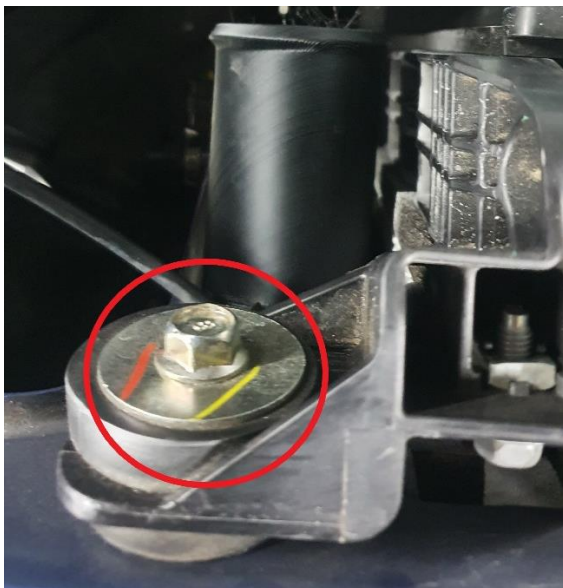
11. Remove the OEM intercooler carefully.
12. Install the OEM air temp sensor onto your Plazmaman intercooler tank.
13. You will need to trim your plastic diversion panels seen below, illustrated in the left photo is the upper diversion panels and on the right is the lower diversion duct, trim both sides in the same spot marked in red. Start with this amount and you may need to cut as needed after test fitment.



14. Read below before continuing then follow these steps in reverse for installation of the Plazmaman intercooler.

NOTES

- Check fitment of the inlet and outlet of the intercooler to be even spacing either side, you will find that the brackets allow for 6mm of movement.
- You may need to adjust the position of the radiator in its rubber mount to make even clearance of the intercooler outlet, loosen the 2x bolts on the upper radiator mount and move it left or right as needed then tighten once complete.



- You will need to bend the small bracket on the bonnet latch for the wiring harness to clear the intercooler, after this check that the bonnet latch clears the intercooler.

